

## Arf1( $\Delta$ 17) Mutant

**Catalog Number:** 10122

**Synonyms:** ADP-ribosylation factor 1

**Background:** Arf1 is a member of the ARF super-family. ARF genes encode small GTPases that increase the ADP-ribosyltransferase activity of cholera toxin and are critical for vesicular trafficking as activators of phospholipase D. Arf1 protein is localized to the Golgi apparatus and has a central role in intra-Golgi transport.

**Amino Acid Sequence:** (1-181,  $\Delta$ 17)

YKLLGEIVTTIPTIGFNVETVEYKNISFTVWDVG  
GQDKIRPLWRHYFQNTQGLIFVVDNSDRERVNEA  
REELMRMLAEDEL RDAVLLVFANKQDLPNAMN  
AAEITDKLGLHSLRHRNWYIQATCATSGDGLYE  
GLDWLSNQLRNQKMGNIFANLFKGLFGKKMRIL  
MVGLDAAGKTTIL

**Source:** Human, recombinant, His6-tag

**Expression Host:** E. coli

**Molecular Weight:** 21 kDa

**Purity:** > 99% by SDS-PAGE

**Constituents:** 20 mM Tris-HCl, pH 8.0, 150 mM NaCl.

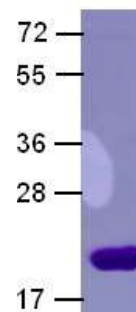
**Physical Appearance:** White or clear

**Concentration:** 1 mg/mL

**Storage:** -80 °C

## Preparation Instructions

Adding of 10 mM  $\beta$ -mercaptoethanol or 1 mM DTT into the solution to protect the protein is recommended and using of non-ionic detergents such as n-Dodecyl  $\beta$ -D-maltoside (DoDM) or polyethylene detergents (e.g. C<sub>12</sub>E<sub>10</sub>) also help to stabilize the protein. Avoid repeated freezing and thawing.



The purity of His-tagged Arf1 Protein  $\Delta$ 17 mutant was determined by SDS-PAGE and Coomassie Brilliant Blue Staining.

## References

1. Amor, J. C. et al., Nature 372: 704-708, 1994.
2. Bobak, D. A. et al., Proc. Nat. Acad. Sci. 86: 6101-6105, 1989.
3. Hirai, M. et al., Genomics 34: 263-265, 1996.
4. Kumari, S. et al., Cell Biol. 10: 30-41, 2008.
5. Lee, C.-M. et al., J. Biol. Chem. 267: 9028-9034, 1992.
6. Mossessova, E. et al., Cell 92: 415-423, 1998.
7. Peng, Z. G. et al., Biofactors 2: 45-49, 1989.
8. Presley, J. F. et al., Nature 417: 187-193, 2002.
9. Renault, L. et al., Nature 426: 525-530, 2003.

FOR RESEARCH USE ONLY. NOT FOR DIAGNOSTIC APPLICATIONS